

THIS KIOSK IS IDEAL FOR

- Vehicle Check in / Check out.
- Specialized parking access.
- Outdoor customer service.
- Videoconferencing.
- RFID tag check in / check out
- Other outdoor applications.



FEATURES:

The standard basic kiosk has the following features:

- All metal 16 gauge stainless steel enclosure.
- 1/4" thick metal base plate.
- Multi-stage Forced Air Ventilation System with thermostat
- Security CamLocks and key.
- 19" high brightness sun readable monitor.
- IP 54 rated insulated area for electronic components
- Small form factor, industrial grade PC.
- Outdoor rugged design.
- All-metal enclosure.
- Temperature & humidity sensors.
- Preparation in base to anchor to ground.

SPECIFICATIONS

MATERIAL:
Stainless steel.

MONITOR:
19" high brightness monitor (touchscreen optional)

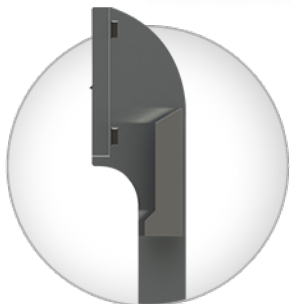
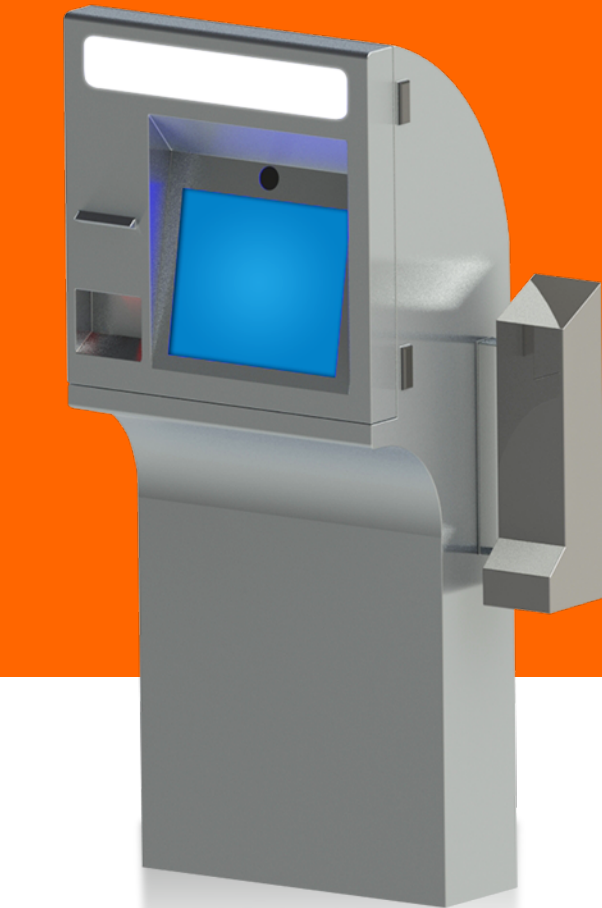
CPU:
Industrial grade 4GB RAM, 120 SSD, Win10, fanless cpu
84W.

ENERGY REQUIREMENTS
110V

SAFETY:
Front door access to electronic components and rear access to A/C unit. Security camlocks.

WEIGHT:
Enclosure: 120 lbs. / With components: 180-200 lbs.

TEMPERATURE:
In operation: 42 – 113 °F (6-45 °C), for storage: 30 - 131 °F (0 - 55 °C).



OPTIONS

COLORS:

Basic or premium color options.

PRINTER:

3", 4" or letter width thermal printers.

PERIPHERALS:

Barcode reader, fingerprint reader, speakers, magnetic stripe reader, webcam, hybrid reader and many others (call for other options).

SENSORS:

Temperature, humidity, proximity.

CPU:

2nd gen. Core i3, i5 and GSeries processors, 2.5 inch solid state drive options from 64 to 256 GB and 4 to 16 RAM available.

NETWORKING:

Standard 10/100/1000 Ethernet. USB 802.11 b/g/n WIFI optional.

OS:

Win 10 Pro or Win 7 Pro (32- and 64-bit).

MONITOR:

19" high brightness sun readable monitor. PCAP or resistive touchscreen options available.

SPECIAL OPTIONS

ENCLOSURE OPTIONS:

Stainless steel, aluminum or powder-coated steel. Stanchion add-on for extra height.

RFID TAG BIN CONTAINER:

Optional RFID tags bin container attached to the side of the kiosk.

LIGHT BOX:

This is an option to have a "light box" on top of the monitor for a backlit customer's logo or design.

GRAPHICS:

Custom vinyl graphics available upon request.

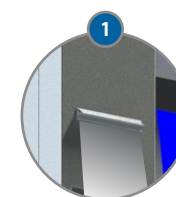
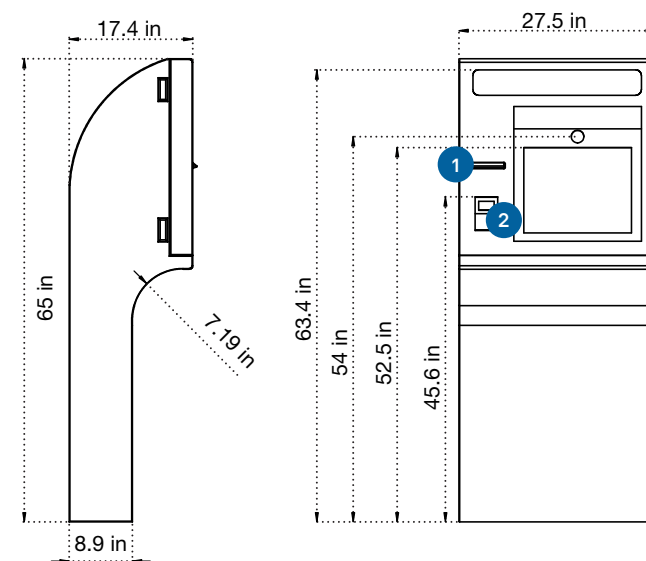
MONITORING AND APPLICATION LOCK DOWN:

Software platform for remote monitoring, session control, security and content update.

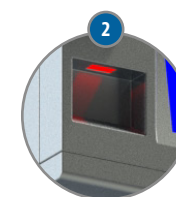
WARRANTY:

1 year standard, can be extended to 3 years.

TECHNICAL DRAWING



3" thermal printer



Barcode Reader

The design and dimensions may vary according to product updates without notice.